



TARKA

138 VSMD



420 - 430 W

Solar photovoltaic monocrystalline panel

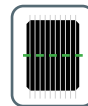
IDEAL FOR GROUND MOUNT SYSTEMS
DUALPV TECHNOLOGY



Low carbon footprint



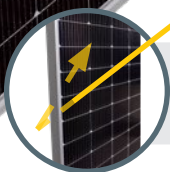
Up to 50% longer string



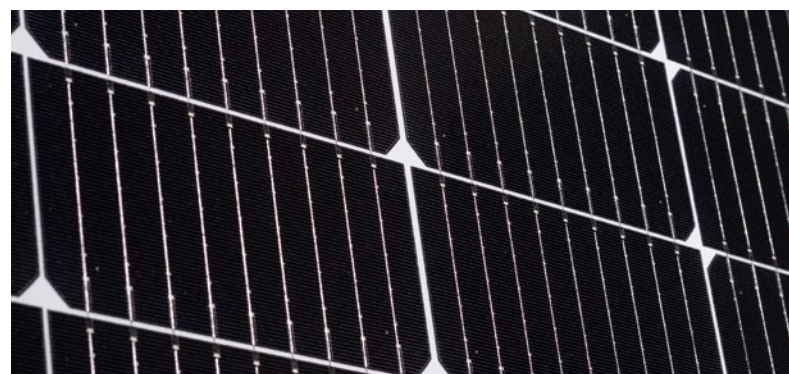
TLS Dicing® technology



Fluorless backsheet



Bifacial version
TARKA 138 VSBD
available



Technical datasheet TARKA 138 VSMD - Monofacial

ELECTRICAL CHARACTERISTICS AT STC ¹

Maximum power - Pmax (Wp)	420	425	430
Module efficiency	20,10%	20,34%	20,58%
Voltage at max power - Vmp (V)	26,50	26,72	26,95
Current at max power - Imp (A)	15,89	15,92	15,95
Open circuit voltage - Voc (V)	31,64	31,80	31,96
Short circuit current - Isc (A)	16,70	16,76	16,82

ELECTRICAL CHARACTERISTICS AT NOCT ²

Power at NOCT (Wp)	316	319	322
Current at NOCT (Imp)	12,67	12,73	12,79
Voltage at NOCT (Vmp)	24,93	25,07	25,21

PANEL FEATURES

Size	2005 x 1042 x 35 mm ³
Weight	23,2 kg
Cell type	Monocrystalline Type P M6-9BB PERC
Cell quantity	138 half cells
Solar glass	Tempered glass 3,2mm
Connectors	Staubli MC4-EVO2
Cable length	2 x 1,2m
Frame	anodized aluminium - silver
Backsheet colour	White
Operational temperature	-40 °C à +85 °C
Max static load	2400 Pa
Protection class	Classe II, IP 68
Max system voltage (V)	1500
Max series fuse rating (A)	30

1. Standard Test Conditions, 1000W/m², 25°C, AM1,5, 2. Normal operating cell temperature, 800 W/m², 45°

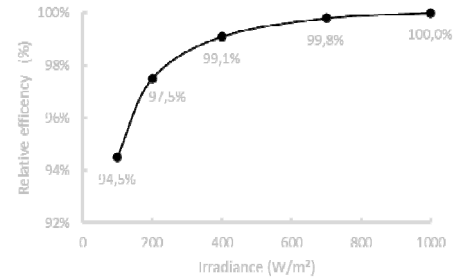
Pmax tolerance : 0/+5W. Flasher measurement tolerance : ±3%

3. +/- 2mm tolerance on the module width and length

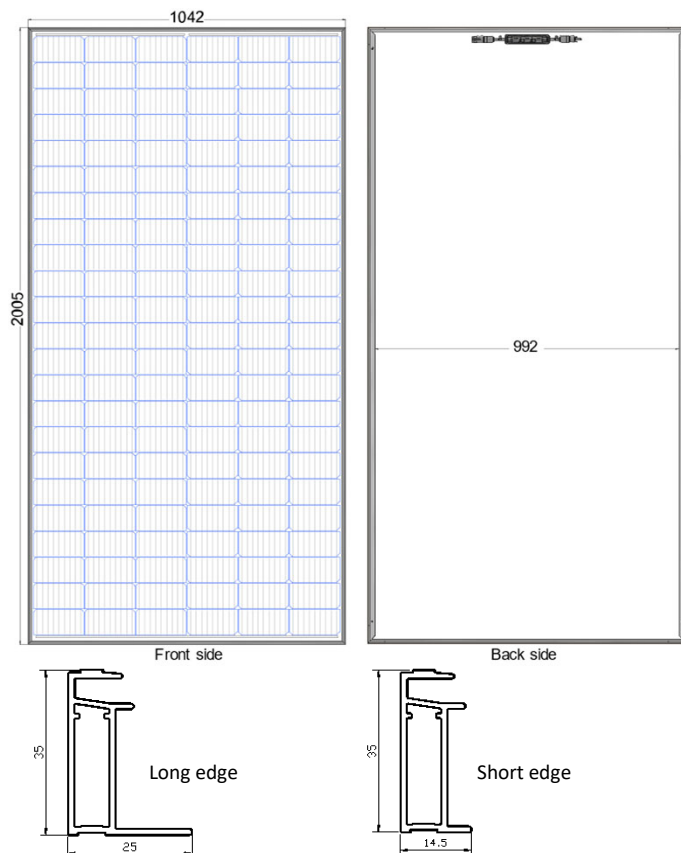
TEMPERATURE RATINGS (STC)

Nominal cell temperature (NOCT)	45°C
Temperature coefficient of Pmax (%/°C)	-0,353
Temperature coefficient of Voc (%/°C)	-0,280
Temperature coefficient of Isc (%/°C)	0,044

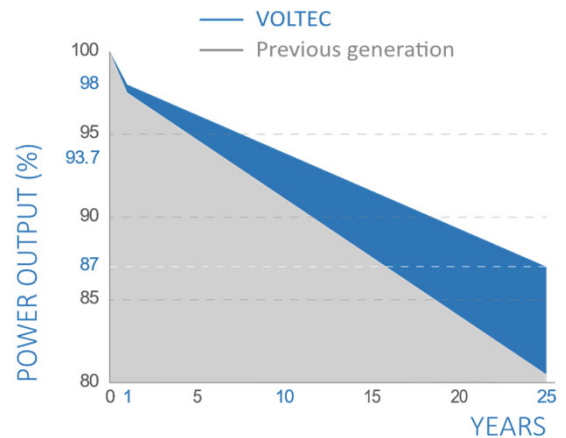
LOW IRRADIANCE PERFORMANCE



MODULE LAYOUT



LINEAR PERFORMANCE WARRANTY



Peak power degradation of max 0.5 % per annum. Module performing at **98 %** minimum during the first year, **93.7 %** after 10 years and at least at **87 %** after 25 years.

PACKAGING INFORMATION

Pallet dimension	2020 x 1060 x 1271 mm
Quantity per pallet	32
Quantity per truck (TIR)	26
Pallet weight	776 kg

CERTIFICATIONS



IEC : 61215 et 61730
IEC : 61701

DECLARATION

The information included in this module datasheet is subject to change without notice and is provided for informational purposes only. No contractual rights are established or should be inferred because of user's reliance on the information contained in this module datasheet.