



TARKA

126 VSBD

380 - 390 W

Solar photovoltaic monocrystalline panel

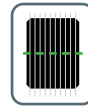
IDEAL FOR LARGE
ROOFTOPS
DUALPV TECHNOLOGY



Low carbon footprint



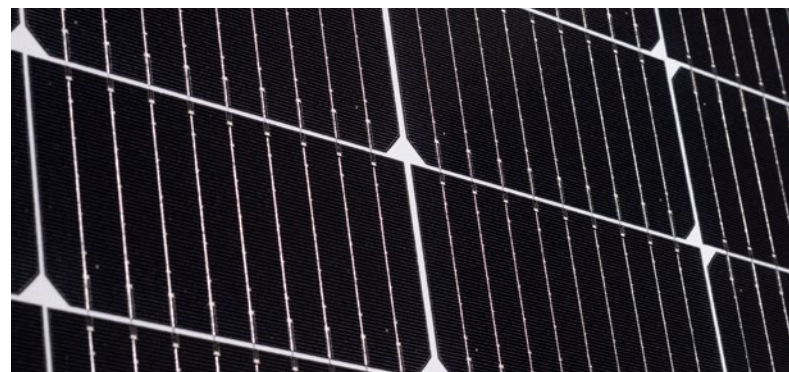
Up to 50% longer string



TLS Dicing® technology



Up to 30% more yield



High efficiency bifacial cells

* Warranties according to sales conditions

Technical datasheet TARKA 126 VSBD - Bifacial

ELECTRICAL CHARACTERISTICS AT STC ¹

Maximum power - Pmax (Wp)	380	385	390
Module efficiency	19,87%	20,14%	20,40%
Voltage at max power - Vmp (V)	24,26	24,43	24,6
Current at max power - Imp (A)	15,67	15,76	15,86
Open circuit voltage - Voc (V)	28,92	29,06	29,2
Short circuit current - Isc (A)	16,5	16,56	16,62

ELECTRICAL CHARACTERISTICS AT NOCT ²

Power at NOCT (Wp)	285	289	293
Current at NOCT (Imp)	12,51	12,56	12,61
Voltage at NOCT (Vmp)	22,79	22,99	23,19

PANEL FEATURES

Size	1835 x 1042 x 35 mm ³
Weight	21,2 kg
Cell type	Monocrystalline Type P M6-9BB PERC Bifacial
Cell quantity	126 half cells
Solar glass	Tempered glass 3,2mm
Connectors	Staubli MC4-EVO2
Cable length	2 x 1,2m
Frame	Black anodized aluminium
Backsheet colour	Transparent
Operational temperature	-40 °C à +85 °C
Max static load	2400 Pa
Protection class	Classe II, IP 68
Max system voltage (V)	1500
Max series fuse rating (A)	30

1. Standard Test Conditions, 1000W/m², 25°C, AM1,5, 2. Normal operating cell temperature, 800 W/m², 45°

Pmax tolerance : 0/+5W. Flasher measurement tolerance : ±3%

3. +/- 2mm tolerance on the module width and length

WITH 10% BIFACIAL BOOST

418	423	428
21,86%	22,12%	22,38%
23,97	24,23	24,49
17,42	17,47	17,52
29,05	29,19	29,33
18,36	18,38	18,4

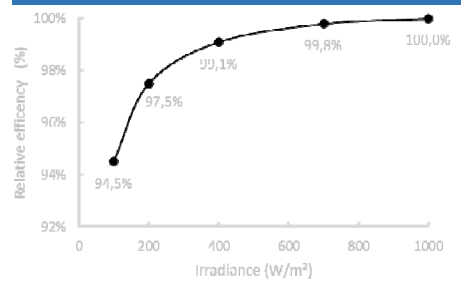
AT NOCT

314	318	322
13,84	13,88	13,92
22,67	22,88	23,09

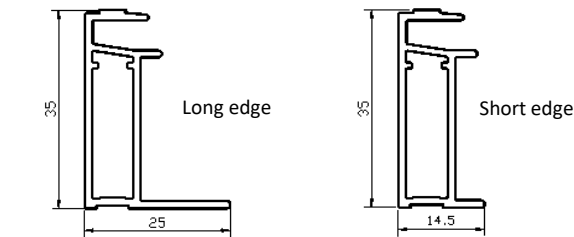
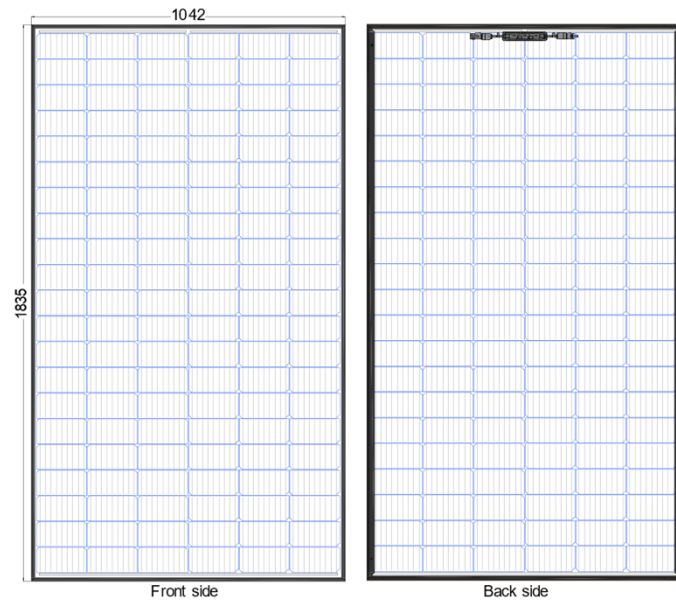
TEMPERATURE RATINGS (STC)

Nominal cell temperature (NOCT)	45°C
Temperature coefficient of Pmax (%/°C)	-0,345
Temperature coefficient of Voc (%/°C)	-0,273
Temperature coefficient of Isc (%/°C)	0,044

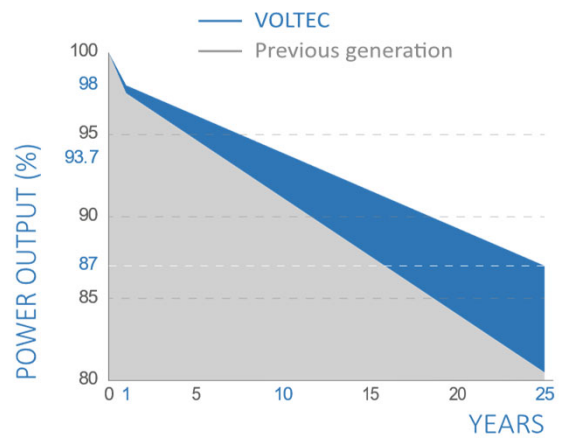
LOW IRRADIANCE PERFORMANCE



MODULE LAYOUT



LINEAR PERFORMANCE WARRANTY



Peak power degradation of max 0.5 % per annum. Module performing at **98 %** minimum during the first year, **93.7 %** after 10 years and at least at **87 %** after 25 years.

PACKAGING INFORMATION

Pallet dimension	1860 x 1060 x 1271 mm
Quantity per pallet	32
Quantity per truck (TIR)	28
Pallet weight	713 kg

CERTIFICATIONS



IEC : 61215 et 61730
IEC : 61701 Salt mist corrosion

DECLARATION

The information included in this module datasheet is subject to change without notice and is provided for informational purposes only. No contractual rights are established or should be inferred because of user's reliance on the information contained in this module datasheet.