

## Handling instructions for pallets of photovoltaic modules VOLTEC SOLAR – TARKA 126, TARKA 138

### I. INTRODUCTION

This leaflet contains information on the handling of the pallets on which the 120 VOLTEC SOLAR photovoltaic modules are conditioned. All instructions must be read and understood before unloading the pallets. If you have any questions, please contact VOLTEC Solar.

In the rest of the text, the terms “modules”, “panel” and “palettes” are used interchangeably.

### II. MANIPULATION

The pallets must be handled with care. The persons in charge of handling the modules must be qualified and authorised to use the handling machinery

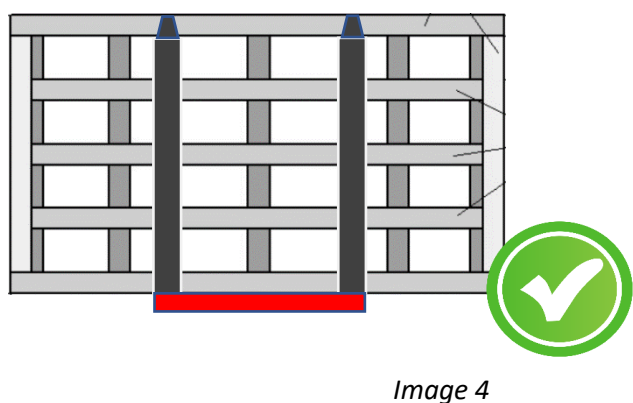
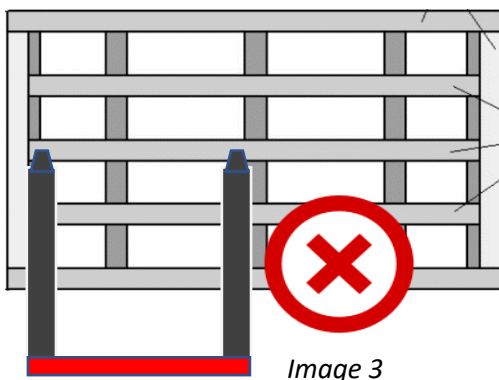
#### 1) Rear loading/unloading with tailgate

If the loading/unloading is done by the rear of the truck, the latter must be equipped with a tailgate, the unloading and the movement of the modules is then done with the help of an electric or manual pallet jack. The pallet must not be taken by the long side (screen 1) but must be taken by the small side (screen 2) because it is the optimal position to move it and avoid possible damage to the PV modules. **A pallet jack with a fork longer minimum 1785mm for the TARKA 126, and 1945mm for the TARKA 138 need be use.**



#### 2) Loading/unloading by the side of the truck with forklift or stacker

If loading/unloading is done by the side of the truck, a forklift or stacker must be used. The positioning of the forks is very important, they must not be positioned inside the two central pads of the pallet (screen 3) but outside the central pads (screen 4)



If the pallet is not at the fork stop (screen 5), the PV module at the bottom of the pallet (screen 6) may be damaged when the pallet is lifted.

The **dimensions of the forks used** for transport must be between **1020mm and 1060mm long** (dimensions between the stop and the end of the fork).



The pallet must be taken to the fork stop (screen 7).

The forks will be ideally placed at the level of the last board, thus allowing an optimal lift of the pallet (screen 8).

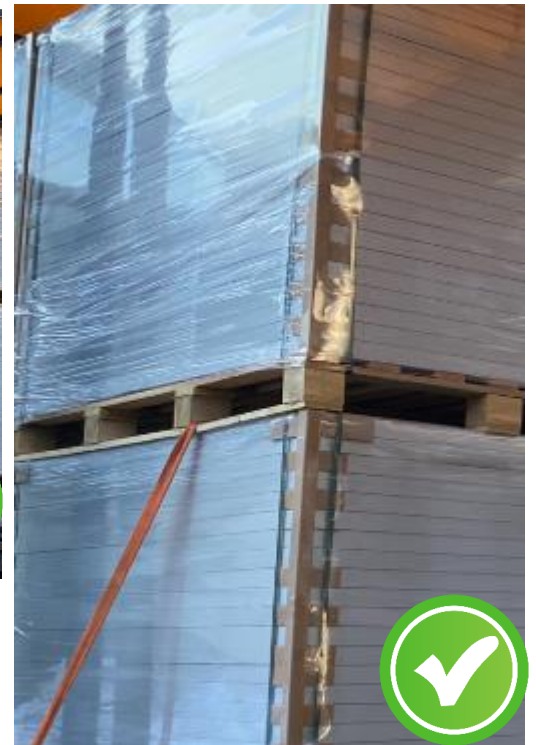


### III. PALLETS PACKAGING IN THE TRUCK

The pallets must not be stacked on more than 2 floors and must be secured by a strap passing over the first pallet and over the first board of the second pallet. The strap must be attached diagonally to the right of the middle 2nd stud. Be sure to respect the pallet alignment (image 10), otherwise there is a risk of damaging the first PV modules of the 1st floor pallet.



screen 9



screen 10



screen 11

For the **last two pallets** of the truck (closest to the door), make sure **to strap the two pallets separately** and protect corners with **plastic angles** (screen 11).